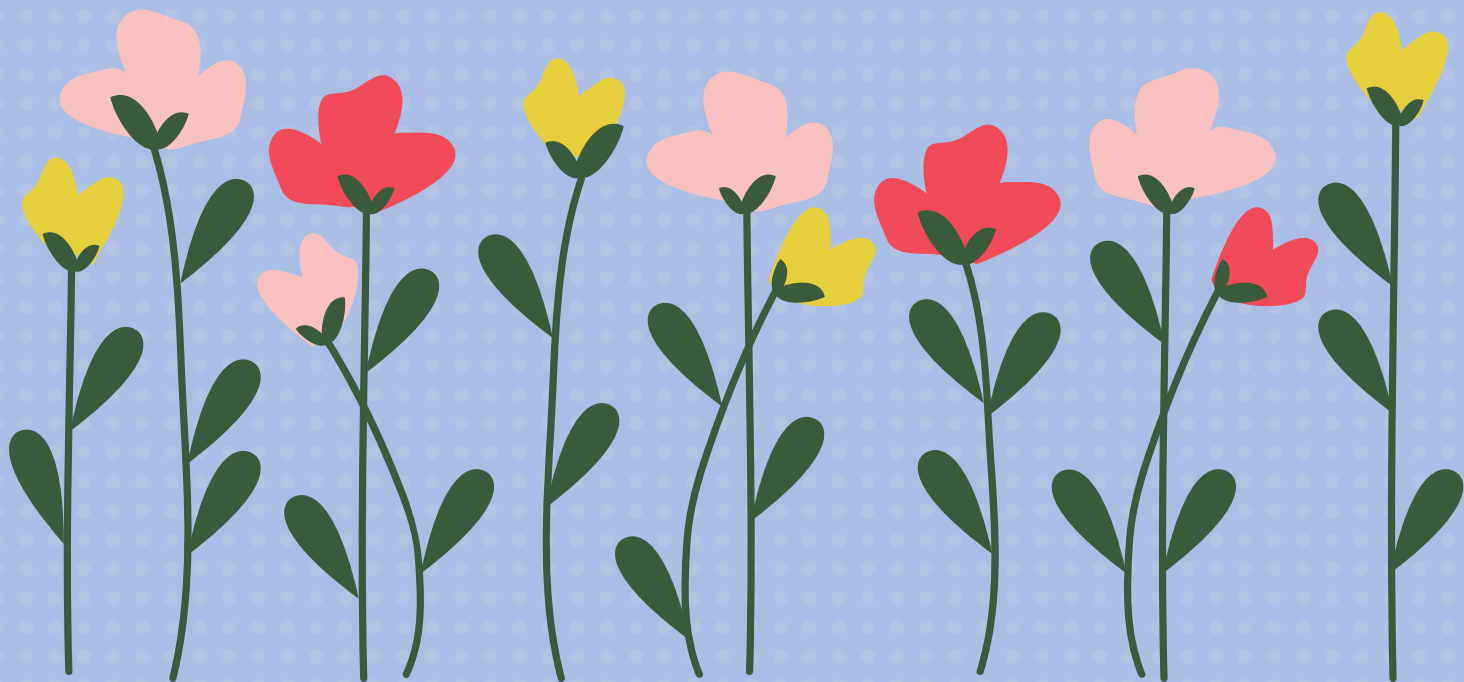


**AS WARMER WEATHER
APPROACHES, SPRING UNIFORMS
MAY BE WORN STARTING IN MAY
THROUGH THE END OF THE YEAR.**

**PLEASE FEEL FREE TO TAKE A LOOK
IN THE UNIFORM CLOSET FOR
SHORTS & SKIRTS IF YOU NEED!**



St. Stephen School Drama Club

Proudly Presents...



April 24th at 7:00 p.m. Doors open at 6:30 p.m.

April 25th at 2:00 p.m. Doors open at 1:30 p.m.

April 25th at 7:00 p.m. Doors open at 6:30 p.m.

Mount St. Mary Academy

3756 Delaware Ave, Tonawanda, NY 14217

Tickets:

Presale:

\$10 for adults

\$8 for seniors

\$5 for children ages 5-17

At the door:

\$12 for adults

\$10 for seniors

\$6 for children ages 5-17

**Free for children 4
and under!**



**To purchase tickets:
Scan the QR code or
call 716-773-7647
with any questions.**

Book and Lyrics by David Lindsay-Abaire
Music by Jeanine Tesori
"I'm A Believer" by Neil Diamond

Based on the DreamWorks
Animation Motion Picture and the
Book by William Steig

Original Production
Directed by Jason Moore
and Rob Ashford

Originally produced on Broadway
by DreamWorks Theatricals and
Neal Street Productions

Shrek the Musical JR. is presented through special arrangement with and all authorized materials are supplied by Music Theatre International



SCHOOL TRIP TO THE



**BUFFALO
ZOO!**

FRIDAY, MAY 29TH

SCHOOL TRIP FOR GRADES K-8

Busses Leave at 9:30 AM

Return at 1:30 PM



\$20

PER STUDENT

FUN ANIMALS & ADVENTURE AWAIT!

**AN OFFICIAL PERMISSION SLIP WILL GO
OUT SOON!**



WHEN

- Friday, May 29th
- Buses leave St. Stephens at 9:30am and return to the school at 1:30pm

WHERE

- Buffalo Zoo

COST

- \$20.00 per child

CHAPERONES

- If you are a chaperone you will meet us at the Zoo at 9:30 near the world fountain right inside the front gates. You will then be given instructions from your child's teacher!
- Parents cannot take their child home, their child must return to school and be signed out (school policy).

BUFFALO ZOO INFO

K-8

WHAT TO WEAR

- Sunscreen
- Hat
- School gym shirt and any shorts
- Sneakers

WHAT TO BRING:

- Disposable water bottle
- A brown bagged lunch
- A drawstring bag to carry everything in

OTHER INFO

- Please do NOT bring money for concessions. You can bring unlimited snacks from home!
- Teachers and chaperones are not responsible for anything lost. Please do not send your child with any important items.

CATHOLIC CHARITIES



STUDENT SUPPORT PROGRAM APRIL 2026



Each month our school mental health professionals push into classrooms to discuss a social emotional skill. This month, all grades will be focusing on confidence. Confidence is the belief in oneself and one's abilities. During the lessons this month, students will work on recognizing and valuing their own unique qualities and skills to raise self-esteem and confidence.



Topic of the Month:

CONFIDENCE



How This Helps in the Classroom:

Confidence helps students face challenges and setbacks with a positive mindset, making them more resilient. Confident students are also more likely to speak up for themselves, ask questions and seek help when needed, leading to better personal and academic outcomes.

Things To Try At Home:

- Participation in organized sports helps develop emotional regulation, increases confidence, and is associated with higher self-esteem in children. Sports and clubs, provide a context for identity development and psychological well-being.



**SHOW YOUR SUPPORT BY DISPLAYING A
ST. STEPHEN SCHOOL SIGN IN YOUR
FRONT YARD!**

Contact the school office to
pick one up and your children
will get a dress down day pass!



SPORTS *Sessions*

Swing away. Go deep. Shoot your shot! Practice your favorite sport or learn new skills on the field, in the gym, or on the water this summer.

FLAG FOOTBALL – NEW FOR 2026!*

July 20–23 Grades 1–4 (Girls Only) 9 A.M.–Noon	July 20–23 Grades 5–8 (Girls Only) 1 P.M.–4 P.M.	July 24 4–6 year olds (Co-Ed) 9 A.M.–Noon
ELMWOOD COMMONS	ELMWOOD COMMONS	ELMWOOD COMMONS
\$200	\$200	\$65

BASKETBALL	CHEER	CREW*	VOLLEYBALL
July 20–24 9 A.M.–3 P.M.	July 20–24 3 P.M.–5 P.M.	August 14–16 Fri. 12:30 P.M.–5:30 P.M. Sat. 9 A.M.–2:30 P.M. Sun. 9 A.M.–Noon	August 15 & 16 8 A.M.–Noon
MSM GYMNASIUM	MSM GYMNASIUM	WEST SIDE ROWING CLUB	MSM GYMNASIUM
\$200	\$130	\$200	\$130

*The West Side Rowing Club Summer Crew Camp is coached by MSM rowing staff. Learn more at www.westsidecrewcamp.com. Flag Football facilitated by our community partner, HealthUP Buffalo, LLC.

CREATIVE *Sessions*

Your creativity knows no bounds! Build on your artistic talents, cook up something new, or sharpen your musical skills at MSM.

ASL & DEAF CULTURE	ANIMAL & OUTDOOR ADVENTURE	DIY: ARTS & CRAFTS	COOKING
July 13–17 10 A.M.–Noon	July 14–16 9 A.M.–Noon	August 10–14 9 A.M.–Noon	June 29–July 3 9 A.M.–Noon
MSM CLASSROOM	MSM CLASSROOM	MSM CAFETERIA	MSM CAFETERIA
\$130	\$130	\$175	\$175

CERAMICS	MARCHING BAND	ROCK BAND	THEATRE/DANCE
July 20, 22, 24 10 A.M.–1 P.M.	July 6–10 (Beginners) July 13–16 (Experienced)** 9 A.M.–Noon Experienced Group Parade – July 17	August 10–14 (Beginners) August 17–21 (Experienced)** 9 A.M.–Noon	July 27–30 9 A.M.–Noon Dance Intensive: 12:15 P.M.–1:15 P.M.
MSM CERAMIC STUDIO	MSM AUDITORIUM	MSM AUDITORIUM	MSM DANCE STUDIO
\$150	\$150/session	\$150/session	\$150/session + \$50 for Dance Intensive

**Groups of what level to register for? Email esuchan-reitz@msmacademy.org

Register Online Now!

FOR YOUR FAVORITE SPORTS OR CREATIVE CAMP

Financial Aid is available for families who inquire directly to the Office of Admissions.

Email Elizabeth Suchan-Reitz,
esuchan-reitz@msmacademy.org,
prior to registering to learn more!



To Register
SCAN THE QR CODE OR
CALL 716.877.1358

The background of the entire image is a repeating pattern of school uniforms, specifically white and light blue button-down shirts with collars. Some shirts have a small logo on the chest. A pink brushstroke graphic is positioned at the top of the white text box.

SCHOOL
UNIFORMS
by TOMMY HILFINGER

SPRING SAVINGS!

15% OFF | APRIL 13-20

PROMO CODE:

APRSLE26EM

www.GlobalSchoolwear.com

The Grand Island Historical Society

Free Open House

The Whitehaven Settlement



SUNDAY, APRIL 19

2:00 - 4:00 PM

Beaver Island State Park at RIVER LEA

(FOLLOW SIGNS IN THE PARK)

Please join us at Lewis F. Allen's historic farmhouse. The museum will present information about Grand Island's 1830s sawmill founded by the East Boston Timber Company to harvest white oak for ship masts.

OUR POWER, OUR PLANET

EARTH DAY 2026

NEW YORK STATE SENATE



SENATOR JEREMY J. ZELLNER

To participate, submit an original essay, poem or artwork through our online Earth Day Showcase.

[ZELLNER.NYSENATE.GOV](https://zellner.nystate.gov)

All entries must be electronically sent.



BNMC

Buffalo Niagara Medical Campus

STUDENT OPEN HOUSE



STEM & Allied
Health Careers

Learn Surgery



- ✓ Explore **career opportunities** on the Buffalo Niagara Medical Campus.
- ✓ See state-of-the-art research labs, hospital rooms, and creative spaces.
- ✓ Enjoy a walking tour through the BNMC District!
- ✓ 7th - 12th Graders welcome and **must** be accompanied by an adult.
- ✓ Join a treasure hunt and win prizes!



Tour Lab & Medical
Facilities

April 18, 2026

11 AM-3PM

640 Ellicott Street, Buffalo, NY, 14208

Register for Free
Today!



follow us
@BNMCinnovates





HSA SPOTLIGHT



Keep up to date on
HSA News by joining

REMIND

Text @sshsa to
81010

HSA Contact Email:
ststephenhsa@yahoo.com

Dress Your Way
Ucoming Dates

- 4/17
- 4/24
- 5/1

*We are looking for chairs for
many of our events.*

*Please contact
ststephenhsa@yahoo.com if
interested*

***Please contact us if you
or anyone you know may
be interested in
sponsoring one or more
of our fundraising events!***



Thank you to all who
volunteered, baked and
supported our fish fry! Special
thanks to Jude Kuehne and the
Fish Fry Committe, Kate Burke,
Sandy Lare, Danielle
Burngasser and Kelly Holland
for organizing this event!

**Chairperson Needed for our
November Shopping Extravaganza**

**Please contact
ststephenhsa@yahoo.com**

Parents save the date for this
years FIELD DAY
Monday, June 22
more details to follow

Ongoing Fundraisers

Bottle/Can Returns

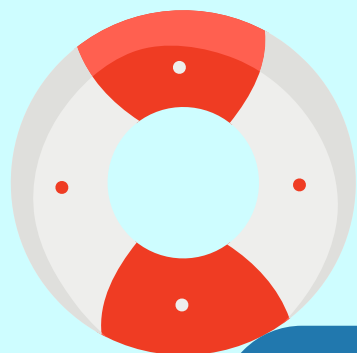
Label your returns and drop off at GI
Location (next to Mighty)

Box Tops

Download the app through app store
and link to SSS

CALLING ALL SWIMMERS

Join the St. Stephen/Catholic Academy Swim Team for the Fall 2026 Season



Practices

Wednesdays 5:30-7:00 PM

Saturdays 12:30-2:00 PM

Sunday Meets

@ Grand Island High School

KINDERGARTEN
THRU 8TH GRADE

Season starts first week
of school and ends
November 15th with
Championship meet at
Aquatic Center

COST \$135 PER
SWIMMER



Questions:
email Allison Wild at
wildallison2487@gmail.com

[CLICK HERE TO REGISTER NOW](#)